

RefSet CreateUpload

Windows Program to Create and Upload GSI, STR and/or Leica Database Files to a Memory Card from a Surpac string file for the Automatic Reference Line and Stakeout Program - RefSet Viva

Note: This version only works with **RefSet Viva v2.5** and above

User Manual

Version 2.0

© Justin Gardner 2015

www.refset.com.au

Contents

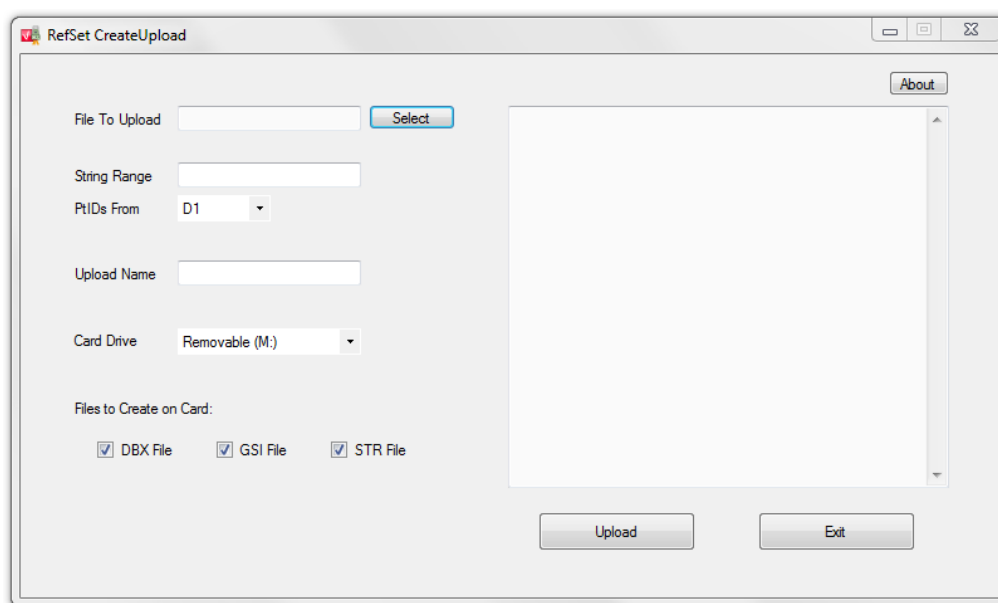
1. REFSET CREATEUPLOAD INSTALLATION.....	2
2. USING REFSET CREATEUPLOAD	2
3. VISUAL C++ RUNTIME LIBRARIES	3

1. RefSet CreateUpload Installation

- Extract the **Install_RefSet_CreateUpload_{version}.exe** file to any folder on the hard drive
- Navigate to the folder on the hard drive using Windows Explorer and double click on the **Install_RefSet_CreateUpload_{version}.exe** file to run the installation
- Click on **Yes** if you get a *User Account Control* message that says “Do you want to allow the following program from an unknown publisher to make change to this computer?”
- Follow the installation instructions to install Refset CreateUpload to the hard disk
- A shortcut to the program will be placed in the *Start* menu and on the desktop

2. Using RefSet CreateUpload

- When the program is started the following screen will be shown



Start Menu Screen

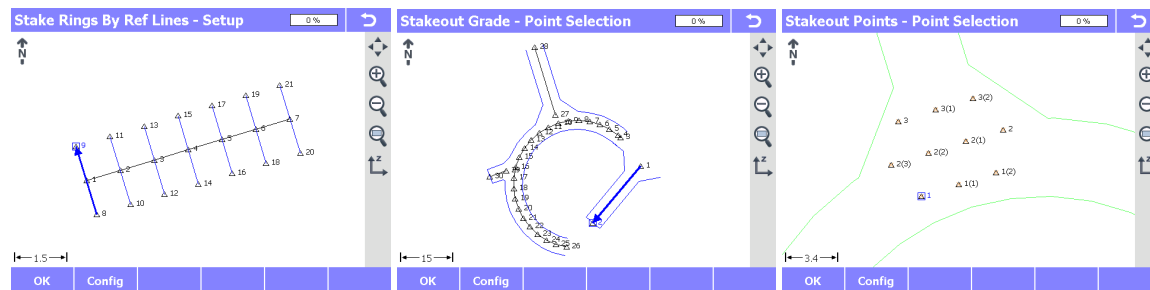
- Select the file to upload by clicking on the **Select** button next to the *File To Upload* entry box and then navigate to the Surpac string file to upload
- When the string file is selected the *Upload Name* is automatically set to the same name as the string file, this may be changed if needed
- Enter a *String Range* to upload using a standard Surpac string range definition (eg: 1,4 or 1;3 or 1,5,2 etc) or leave blank for all strings in the file
- Select the description field (D1 to D4) to set the upload file Point IDs in the *PtIDs From* selection box

- Select the card drive to upload the files to in the *Card Drive* selection box
- Under *Files to Create on Card* select the file types to upload (any combination of files can be selected)
- Check that the memory card is connected to the computer and press **Upload** to upload the files
- The file/s will then be copied to the memory card
- When the file/s have been copied the program will check that the file/s are now on the memory card and if the file/s do not exist a warning screen will appear
- Information about the upload will be displayed in the report window including the point coordinates of the points that are in the string file
- If the Leica database is not created then see Visual C++ Runtime Libraries below for instructions on how to fix this

Notes:

- If there are points with duplicate Point ID's in the string file then the duplicate Point ID's will be appended with a sequential number in the upload file/s (eg: If there is more than one point in the string file with '1' as the Point ID then the first will named '1', the second will be '1(1)', the third will be '1(2)', etc)
- If there are points with blank Point ID's in the string file then these points will not appear in RefSet Viva as *Control Points* but will be used in the RefSet Viva map view to display the string lines

RefSet Viva Map Views:



All Point ID's Set

Blank Point ID's
(eg: Walls Shown as Lines Only)

Duplicate Point ID's

3. Visual C++ Runtime Libraries

- If after installation the Leica database program does not work then the **Visual C++ Runtime Libraries** may need to be installed on the computer
- To do this go to <http://support.microsoft.com/kb/2019667> and download and install the latest version of the **Visual C++ Redistributable Package** suitable for the computer